



LECCY & GENESIS

PRODUCT  
CATALOGUE  
2022

Experience luxury with  
*a touch of technology*

# ABOUT HOME AUTOMATION

## Home Automation made easier!

From lighting to air-conditioning, from television to door-locks, almost every electrical device and system in your home can be automated and managed via your smart-phones and voice assistants like Alexa, Google Assistant, and Siri. This provides you with improved convenience, comfort, and energy efficiency.

Home Automation has spanned a lot over the last few years. India, being the third highest home automated country has 13.15 million smart homes that are expected to reach till 20 Million by the end of 2025.

Think of it as an unseen housekeeper, who's always there to help you with your chores and give you a helping hand. Experience luxury and convenience at the touch of a button.

Turn your ordinary home into a Smart Home with home automation products from Leccy & Genesis by Urja Smart.

## SMART HOME

DOOR



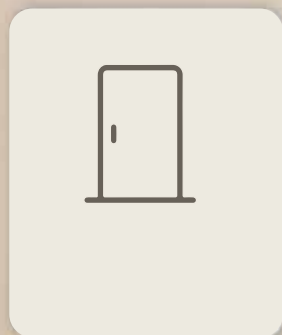
AC



CURTAINS



LIGHT



# ABOUT COMPANY

Leccy & Genesis powered by Urja Smart is a new era in Smart Automation, trading in IoT, end-to-end resolutions, revamping and glorifying services for smart Automation for all premises such as Home, Business, Hospital, School and Hotel niche.

Innovations drive and define our core, established in 2020, with a pledge for growing above and beyond our client's expectations. We believe in creating brilliant home automation solutions. Our goal is to bring luxury with the finest details to your space keeping in mind the budget of a common man.

**ISO 9001:2015** certified Urja Smart has been on board with a remarkable journey of integrating your life glamorously with Automation. We work towards making your life easy and assist you in choosing the way you want to live Let smart home control be a pleasure, not a clutter for you.



# SMART VIDEO DOORBELL

**VIDEO DOORBELL**



**VIDEO DOORBELL V2**





# SMART VIDEO DOORBELL



2-Way  
Communication



Full HD  
1080p



IR  
Night Vision



Truly  
Wireless

The Smart Video Doorbell is the prettiest buzzer for your home. This Sleek and stylish device fits into any doorbell frame; a one-time purchase that assures security and convenience. It comes with a high-definition video feature that offers two-way communication to hear and reply instantly to the buzz from anywhere around the world.

**Model:** DB01

**Power:** 5600 mAh

**Product Dimensions:** 147 x 46 x 38 mm

**Compatible:** Amazon Echo, Echo Dot, Google Nest

**Chime:** Free

**Storage:** SD Card + Cloud

**Connectivity:** WiFi 2.4 GHz

**Alerts:** Tamper Alarm, Low Battery, Motion Detection Alerts

**Color:** Black

**Weight:** 275 grams

**Supported Devices:** Android/iOS



# SMART VIDEO DOORBELL V2



**2-Way  
Communication**



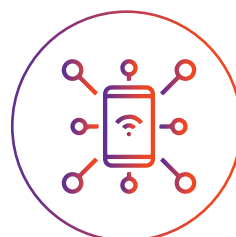
**Motion  
Detection**



**Night  
Vision**



**Anti-Theft  
Alarm**



**Device  
Sharing**



**Voice  
Changer**



Fully compatible with Echo Show

Get complete control of your front door with this Smart Wireless Video Doorbell V2. Equipped with a Full HD camera, this doorbell allows you to hear and talk to your visitors from anywhere in the world without ever leaving your comfort zone. It brings additional features like DND mode, Automated Replies, Voice Changer, and Tamper Alarm.

**Model:** DBV2

**Power:** 5600 mAh

**Product Dimensions:** 146 X 61 X 33.8 mm

**Compatible:** Amazon Echo, Echo Dot, Echo Show, Google Nest, Google Nest Hub

**Chime:** Free

**Supported Devices:** Android/iOS

**Storage:** SD Card + Cloud

**Connectivity:** WiFi 2.4 GHz

**Alerts:** Tamper Alarm, Low Battery, Motion Detection Alerts, Incoming Calls

**Color:** Black

**Weight:** 419 grams



# SMART SWITCH

10 Amp Switch



16 Amp Switch



FAN REGULATOR







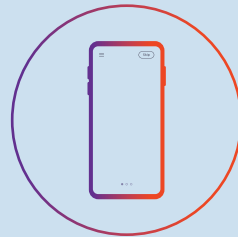
# SMART WIFI SWITCH



Wi-Fi



Bluetooth



Mobile  
App



Voice  
Control

1 TOUCH



2 TOUCH




4 TOUCH

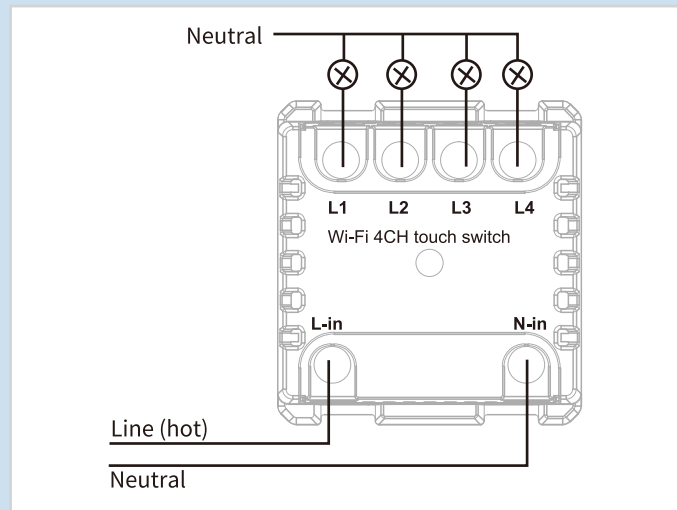


# ABOUT SMART WIFI SWITCH

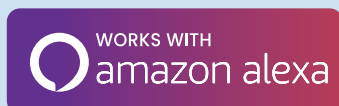
Transform your house into a smart house by replacing your traditional switches. These retro fit Smart switches deliver a fantastic experience for your lighting and other electrical appliances while also maintaining a modern and sleek aesthetic appeal.

Model: 1 Touch-LnG32V2	Model: 2 Touch-LnG16V2	Model: 4 Touch-LnG10V2
<b>Input:</b> 160V-270V, 50/60Hz	<b>Operating Temp:</b> -10° C to 70° C	<b>Dimensions:</b> 48mm X 50.6mm X 46.7 mm
<b>Connectivity:</b> WiFi, Bluetooth	<b>Radio Frequency:</b> 865-867MHz	<b>Installation:</b> Retro Fit (no-rewiring required)
<b>Material:</b> Tempered Glass Panel, Polycarbonate Body	<b>WiFi Supported:</b> 2.4 GHz	<b>Color:</b> Black
<b>Max Loading:</b> 1-Touch: 6500 Watts 2-Touch: 3300 Watts 4-Touch: 2000 Watts	<b>Devices Supported:</b> Android,iOS	<b>Warranty:</b> 12 Months
		

## INSTALLATION DIAGRAM OF **SMART WIFI SWITCH**



WORKS WITH **AMAZON ALEXA, OK GOOGLE AND APPLE SIRI**



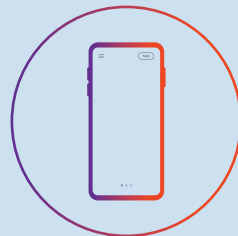
# SMART FAN REGULATOR



Wi-Fi



Bluetooth



Mobile  
App



Voice  
Control

Control your fan with your phone or with voice commands. No need to get up every time you need to adjust the fan speed again and again. Designed for Indian standards, this fan regulator gives you a humming less experience. Easy, hassle-free installation and unmatched comfort for you and your family.

*"Alexa, set the fan speed to max"*

**Model:** LnGFRV2

**Input:** 160V-270V, 50/60Hz

**Connectivity:** WiFi, Bluetooth

**Material:** Tempered Glass Panel,  
Polycarbonate Body

**Speed:** 5 Speed Control

**Operating Temp:** -10° C to 70° C

**Radio Frequency:** 865-867MHz

**WiFi Supported:** 2.4 GHz

**Devices Supported:** Android,iOS

**Max Load:** 400 Watt

**Dimensions:** 48mm X 50.6mm X  
46.7 mm

**Installation:** Retro Fit  
(no-rewiring required)

**Color:** Black

**Warranty:** 12 Months



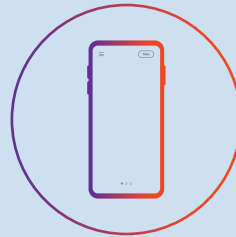
# SMART DIMMER SWITCH



Wi-Fi



Bluetooth



Mobile  
App



Voice  
Control

The revolutionary Smart Dimmer Switch lets you dim the lights smoothly and set the mood from your phone, or by using voice control. It is backlit to make it safe and visible to locate in the dark.

*"Alexa set brightness to 20 percent"*

**Model:** LnG500V2

**Input:** 160V-270V, 50/60Hz

**Connectivity:** WiFi, Bluetooth

**Material:** Tempered Glass Panel,  
Polycarbonate Body

**Channel:** 2 Channel Dimmer  
Switch

**Operating Temp:** -10° C to 70° C

**Radio Frequency:** 865-867MHz

**WiFi Supported:** 2.4 GHz

**Devices Supported:** Android,iOS

**Max Load:** 400 Watt

**Dimensions:** 48mm X 50.6mm X  
46.7 mm

**Installation:** Retro Fit  
(no-rewiring required)

**Color:** Black

**Warranty:** 12 Months



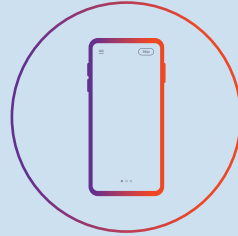
# SMART CURTAIN SWITCH



Wi-Fi



Bluetooth



Mobile  
App



Voice  
Control

The Smart Curtain Switch lets you control your existing motorized Curtain System for Easy Opening & Closing. Controllable via the app on a mobile device or with Alexa and Google Home, provides improved flexibility over traditional curtains.

*"Alexa, open the bedroom curtains"*

**Model:** LnG1V2

**Input:** 160V-270V, 50/60Hz

**Connectivity:** WiFi, Bluetooth

**Material:** Tempered Glass Panel,  
Polycarbonate Body

**Channel:** 2 Channel Dimmer  
Switch

**Operating Temp:** -10° C to 70° C

**Radio Frequency:** 865-867MHz

**WiFi Supported:** 2.4 GHz

**Devices Supported:** Android,iOS

**Max Load:** 400 Watt

**Dimensions:** 48mm X 50.6mm X  
46.7 mm

**Installation:** Retro Fit  
(no-rewiring required)

**Color:** Black

**Warranty:** 12 Months



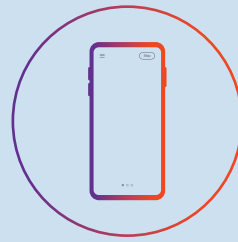
# SMART PLATES



Wi-Fi



Bluetooth



Mobile  
App



Voice  
Control

Add an aesthetic appeal to your home with our Modular Switch Boards. Available in 4, 6, 8, and 12 and all Module options. Plates are customizable and come with a retro fit design that fits into your existing setup with no additional re-wiring required. Switches are compatible with WiFi and Bluetooth and are controlled via mobile app, voice assistants, and physical touch buttons.





*SMART*  
**DOORLOCKS**

**#TrulyKeyless**





### RESIDENTIAL



### PERSONAL



### OFFICE USE



# SMART DOORLOCK

## M1



### Unlock Methods



Fingerprint



Password



RFID Card



Emergency Key



OTP

### User Access Rights



Admin



Guest

### Door Type



Wooden



Metal

### Door Thickness



40mm-120mm

### Features



Manual Knob



Emergency USB Power



Reversible



Spy Safe Pin



Long Battery Life

L&G M1 Smart Door Lock comes under the classic range of features that empower you with 5-in-1 lock & Unlock options. It comes with a sleek modern Edge Arc design that complements any interior or exterior door for residential homes, apartments, or commercial offices.

**Power:** 8 x AA batteries

**Bolts:** Stainless Steel Mortise with 5 Deadbolts

**Unlocking Methods:** Fingerprint, Password, RFID Card, OTP, Emergency Key

**Material:** Aluminium Alloy, Glass Panel

**Alerts:** Low Battery, Tamper Alarm

**Connectivity:** 2.4 GHz

**Devices Supported:** Android, iOS

**More Features:** Dual Combination Mode, History Logs, Low Power Consumption

**Dimensions:** 135mm X 370mm X 69 mm

**Warranty:** 24 Months



# SMART DOORLOCK X9S



## Unlock Methods



Fingerprint



Password



RFID Card



Emergency Key



OTP

## User Access Rights



Admin



Guest

## Door Type



Wooden



Metal

## Door Thickness



40mm-120mm

## Features



Manual Knob



Emergency USB Power



Reversible



Spy Safe Pin



Long Battery Life

L&G X9S Smart Door Lock comes under the classic range of our products that empower you with 5-in-1 lock & Unlock options. The Doorlock is highly stable and the Aluminum alloy finish is designed to survive tough weather conditions. Available in 2 bold colors- Black and Red Bronze.

**Power:** 4 x AA batteries

**Bolts:** Stainless Steel Mortise with 5 Deadbolts

**Unlocking Methods:** Fingerprint, Password, RFID Card, OTP, Emergency Key

**Material:** Aluminium Alloy, Glass Panel

**Alerts:** Low Battery, Tamper Alarm

**Connectivity:** 2.4 GHz

**Devices Supported:** Android,iOS

**More Features:** Dual Combination Mode, History Logs, Low Power Consumption

**Dimensions:** 135mm X 300mm X 69 mm

**Warranty:** 24 Months



# SMART DOORLOCK

## A8



### Unlock Methods



Fingerprint



Password



RFID Card



Emergency Key



OTP

### User Access Rights



Admin



Guest

### Door Type



Wooden



Metal

### Door Thickness



35mm-55mm

### Features



Electronic Anti Lock



Emergency USB Power



Reversible



Spy Safe Pin



Long Battery Life

L&G A8 Smart Door Lock for your home is moderate on your pocket yet premium in performance. The Digital doorlock comes with a sleek, elegant design that complements any interior or exterior door for residential homes, apartments or commercial offices.

**Power:** 4 x AA batteries

**Bolts:** Stainless Steel Mortise with Double Deadbolts

**Unlocking Methods:** Fingerprint, Password, RFID Card, OTP, Emergency Key

**Alerts:** Low Battery, Tamper Alarm

**Connectivity:** 2.4 GHz

**Devices Supported:** Android,iOS

**Dimensions:** 135mm X 370mm X 48 mm

**Warranty:** 24 Months

**Finish:** Glossy/Matte

**Material:** Aluminium Alloy

# SMART DOORLOCK

## A6



### Unlock Methods



Fingerprint



Password



OTP



RFID Card



IR Remote

### User Access Rights



Admin



Guest

### Door Type



Single Glass Door with Frame



Single Glass Door without Frame



Double Glass Door with Frame



Double Glass Door without Frame

### Door Thickness



8mm-12mm

### Features



Doorbell Feature



Emergency USB Power



Reversible



Spy Safe Pin



Long Battery Life

L&G A6 Smart Door Lock for glass doors comes with a sleek and glossy design that is best suited for office use and private cabins. Suitable for Single and Double Glass Doors (framed or frameless), it is empowered by 5 different unlocking options.

**Power:** 4 x AA batteries

**Bolts:** Double Stainless Steel Pins

**Unlocking Methods:** Fingerprint, Password, OTP, RFID Card, IR Remote

**Alerts:** Low Battery, Tamper Alarm

**Connectivity:** 2.4 GHz

**Devices Supported:** Android, iOS

**Dimensions:** 116mm X 200mm X 68 mm

**Warranty:** 24 Months

**Material:** Aluminium Alloy

# SMART DOORLOCK

## H3



### Unlock Methods



Fingerprint



Password



OTP



Bluetooth



App  
Unlock

### User Access Rights



Admin



Guest

### Door Type



Wooden



Metal

### Door Thickness



30mm-50mm

### Features



Emergency  
USB Power



Reversible



Bluetooth  
Unlocking



Long  
Battery Life

L&G H3 Smart Doorlock is a smart security solution for your door which can be operated from your phone. The doorlock can be used on wooden & metal doors and it is best suited for personal usage like bedrooms and private cabins.

**Power:** 4 x AAA Batteries

**Bolts:** Stainless Steel Tongue

**Unlocking Methods:** Fingerprint, Password, OTP, RFID Card, IR Remote

**Alerts:** Low Battery, Tamper Alarm

**Connectivity:** Bluetooth

**Devices Supported:** Android,iOS

**Dimensions:** 153mm X 60mm X 53 mm

**Warranty:** 24 Months

**Material:** Zinc alloy

# *A Complete* **Home Automation Solution**

Smart IR Blaster



Remote Switches



Smart Curtains/Blinds



PIR Motion Sensor

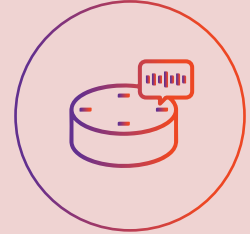
Smart Plugs



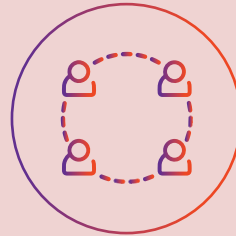
# SMART IR BLASTER



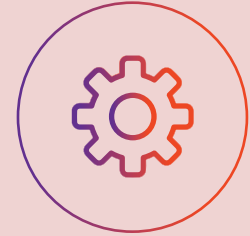
App  
Control



Alexa/ Google  
Assistant  
Voice Control



Family  
Sharing



Works With  
Any IR Device

Smart IR Blaster lets you control your remote-operated devices effortlessly. Works with IR-based devices like TV, Set-top box, AC, Air-coolers, Home theaters, Ceiling fans etc. It also comes with pre-loaded remotes of all the popular brands of TV setup boxes & ACs.

*"Alexa, set 22 degrees on my bedroom AC"*

**Model:** LngIRv1

**Product Dimensions:** 69 x 69 x 29 mm

**Compatible:** Amazon Alexa/ Google Assistant

**Connectivity:** WiFi 2.4 GHz

**Maximum Range:** Within a Standard Room

**Color:** Black

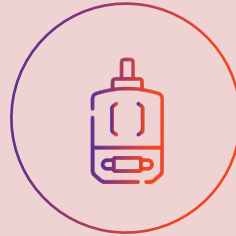
**Weight:** 65 grams

**Supported Devices:** Android/iOS

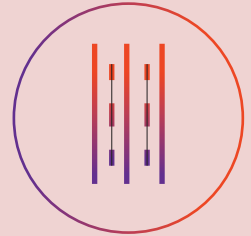




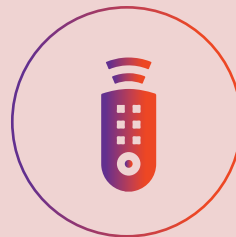
# SMART CURTAINS/ BLINDS



**Silent  
Motor**



**Silent  
Tracks**



**Remote  
Control**



**App  
Control**

Smart Curtain Motor and Tracks let you control your blinds/curtains with remote control, Mobile app and voice assistants (Alexa /Google Assistant/ Siri). Silent motor with noiseless operations make them more suitable for domestic & office use .

***"Alexa, open office blinds to 20 percent"***

**Model (Curtain Motor):** LnGCMv1

**Model (Curtain Track):** LnGCTv1

**Product Dimensions:** Motor- 285 x 58 x 60 mm

**Compatible:** Amazon Alexa/ Google Assistant

**Connectivity:** WiFi 2.4 GHz

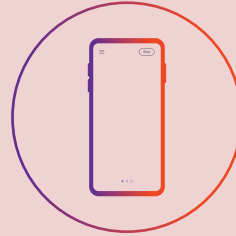
**Color:** White

**Max Payload :** 50kg

**Supported Devices:** Android/iOS



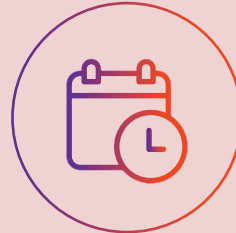
# SMART PLUGS



**Mobile  
App**



**Plug and  
Play**



**Schedule  
On/Off**



**Voice  
Control**

Smart Plugs let you control your traditional appliances in a smarter way. Its plug & play device, comes equipped with various features like scheduling option, timer and much more. Control this plug with mobile app and voice assistants (Alexa/ Google Assistant/ Siri). Ideal for Geysers, Refrigerators, Lamps, Electric Kettles and others.

***"Alexa, turn on the lamp everyday at 6PM"***

**Model:** LnG10V1, LnG16V1

**Product Dimensions:** 69 x 69 x 67 mm

**Compatibility:** Alexa/ OK Assistant

**Connectivity:** WiFi 2.4 GHz

**Color:** White

**Weight:** 130 gram

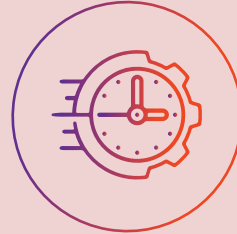
**Supported Devices:** Android/iOS

**Max Wattage:** 10Amp- 1300 W  
16Amp- 3600 W

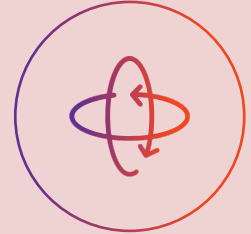


PIR

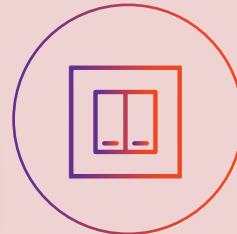
# MOTION SENSOR



**Adjustable Time  
and Sensitivity**



**360  
Degree**



**Roma  
Fit**



**No Re-Wiring  
Required**

PIR Motion Sensor can sense your presence and automatically turn on the lights, fans, or other attached load and switch it off after no motion is detected in the sensor range. It comes with a 360° detection angle, adjustable time and different sensitivity levels. **Ideal for indoor usage.**

**Model:** LnGPIRV1

**Product Dimensions:** 48 x 48 x 30 mm

**Detection Angle:** 360°

**Fitting:** Roma Fit

**Color:** White

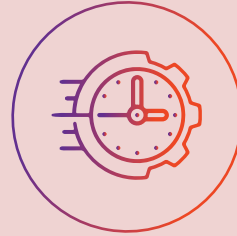
**Weight:** 50 gram

**Time:** Adjustable; 1 second ~ 5 minutes

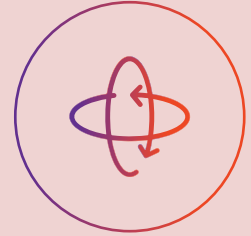
**Sensitivity:** Adjustable



# MICROWAVE MOTION SENSOR



**Adjustable Time  
and Sensitivity**



**360Degree  
Detection**



**Indoor/ Outdoor  
Use**



**Energy  
Efficient**

Nano 16 microwave motion sensor adopts a microwave sensor with high-frequency electromagnetic waves and an integrated circuit. It gathers automatism, convenience, safety, energy-saving, and practical functions. The wide detection field depends upon the detectors and it comes with adjustable time and sensitivity settings. Ideal for indoor and outdoor usage.

**Model:** LnGMWV1

**Product Dimensions:** 90 x 90 x 20 mm

**Detection Angle:** 360°

**Ideal Usage:** Indoors, Outdoors

**Color:** White

**Time:** 10 second ~ 12 minutes

**Sensitivity:** Adjustable

**Ambient Light:** 3-2000LUX



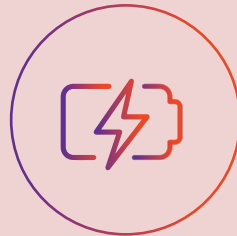
# REMOTE SWITCHES



IR Remote Control



Roma Fit



Energy Efficient



No Re-Wiring Required

L&G Remote Controlled Switch Plate is a Smart Addition to your home that lets you control your switches with IR remote control. Available in 4 Module and 6 Module plates, switches can be used to control lights, fans, sockets, and other accessories via remote or physical soft-click buttons.

**Model:** 4 Module- LnG4MV1

**Model:** 6 Module- LnG6MV1

**Product Dimensions:** 4M- 146 x 90 x 30mm;  
6M- 220 x 90 x 30mm

**Compatibility:** IR Blasters/ IR Remotes

**Color:** Black/White

**Fitting:** Roma Fit

**Weight:** 4M- 201 gram ; 6M- 247 gram

**Supported Devices:** Android/iOS



#LiveSmart



Someone is at the  
**Main Door...**







LECCY & GENESIS


POWERED BY

**URJA SMART**  
Home Automation

# REACH US AT

 818181-0654     844-77-46047

 [www.urjasmart.com](http://www.urjasmart.com)

 A 24, First Floor, Chandigarh city centre,  
Zirakpur, 140603, India

 /C/URJASMARTAUTOMATION

 /URJASMART

 /URJASMART

 /URJASMART